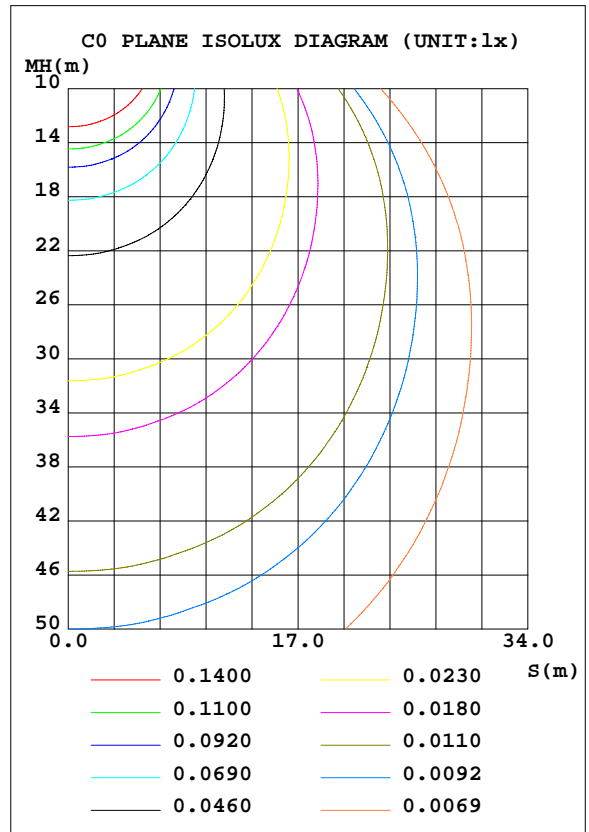
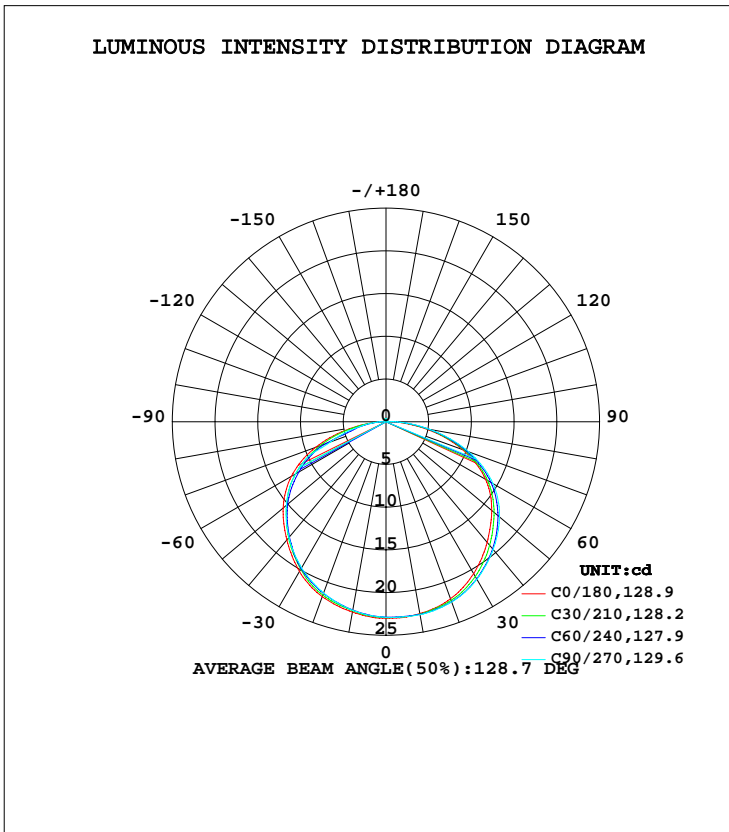


LUMINAIRE PHOTOMETRIC TEST REPORT

NAME: 软灯条 红光	TYPE:	WEIGHT:
SPEC.:LWF-NS-112467W60	DIM.: 0.5	SERIAL No.:
MFR.: LEDWIDE LIGHTING CO., LTD	SUR.:0.01*0.5	Shielding Angle:

DATA OF LAMP		PHOTOMETRIC DATA Eff: 31.72 lm/W			
MODE		I _{max} (cd)	23.01	S/MH(C0/180)	1.31
NOMINAL POWER(W)	2.46	LOR(%)	100.0	S/MH(C90/270)	1.29
RATED VOLTAGE(V)	24	TOTAL FLUX(lm)	78.109	η UP, DN(C0-180)	0.9,51.8
NOMINAL FLUX(lm)	78.1086	CIE CLASS	DIRECT	η UP, DN(C180-360)	0.7,46.6
LAMPS INSIDE	1	η up(%)	1.6	CIBSE SHR NOM	1.50
TEST VOLTAGE(V)	24	η down(%)	98.4	CIBSE SHR MAX	1.50



C Range: 0 - 360DEG
 C Interval: 15.0DEG
 Test Speed: HIGH
 Temperature:25.3DEG
 Operators:
 Test Date:2019-12-10

γ Range: 0 - 180DEG
 γ Interval: 1.0DEG
 Test System:EVERFINE GO-2000A_V1 SYSTEM V2.0.362
 Humidity:65.0%
 Test Distance:12.586m [K=1.0000]
 Remarks:

ZONAL FLUX DIAGRAM

ZONAL FLUX DIAGRAM:

γ	C0	C45	C90	C135	C180	C225	C270	C315	γ	Φ zone	Φ total	%lum, lamp
10	22.79	22.78	22.93	22.71	22.61	22.49	22.41	22.52	0- 10	2.174	2.174	2.78,2.78
20	22.06	22.27	22.45	22.13	21.80	21.59	21.35	21.60	10- 20	6.312	8.486	10.9,10.9
30	20.53	21.05	21.28	20.84	20.25	19.97	19.74	19.97	20- 30	9.802	18.29	23.4,23.4
40	18.43	19.07	19.52	18.86	18.05	17.65	17.67	17.62	30- 40	12.18	30.47	39,39
50	16.15	16.76	17.35	16.52	15.71	14.97	15.23	15.03	40- 50	13.28	43.74	56,56
60	13.45	13.89	14.45	13.58	12.79	11.92	12.23	12.09	50- 60	13.06	56.80	72.7,72.7
70	9.525	9.960	10.31	9.450	8.751	7.889	6.879	8.184	60- 70	10.98	67.79	86.8,86.8
80	4.646	5.088	5.230	4.555	3.904	3.395	2.856	3.312	70- 80	6.752	74.54	95.4,95.4
90	0.3328	0.8936	1.087	0.6059	0.1551	0.4859	0.4832	0.5270	80- 90	2.331	76.87	98.4,98.4
100	0.0411	0.1068	0.0904	0.0986	0.0905	0.0904	0.1150	0.0575	90-100	0.2077	77.08	98.7,98.7
110	0.1068	0.1889	0.1231	0.1725	0.1560	0.0904	0.1480	0.0986	100-110	0.1179	77.19	98.8,98.8
120	0.1641	0.2465	0.1561	0.2383	0.1888	0.1396	0.1889	0.1396	110-120	0.1552	77.35	99,99
130	0.2052	0.2629	0.2626	0.2628	0.2138	0.1396	0.2053	0.1396	120-130	0.1737	77.52	99.3,99.3
140	0.2711	0.2794	0.2546	0.2875	0.2547	0.1888	0.2465	0.1561	130-140	0.1760	77.70	99.5,99.5
150	0.2711	0.3121	0.2875	0.3121	0.2958	0.2546	0.2876	0.2134	140-150	0.1623	77.86	99.7,99.7
160	0.2711	0.3203	0.2875	0.3286	0.3039	0.2711	0.3368	0.2711	150-160	0.1331	77.99	99.9,99.9
170	0.2711	0.3287	0.2875	0.3286	0.3039	0.2711	0.3532	0.2711	160-170	0.0845	78.08	100,100
180	0.2957	0.3450	0.3532	0.3450	0.2957	0.2957	0.3450	0.3039	170-180	0.0293	78.11	100,100
DEG	LUMINOUS INTENSITY:cd									UNIT:lm		

Conical surface Flux(90deg): 37.045 lm

%lum = 47.4%
%lamp = 47.4%

Conical surface Flux(120deg): 56.804 lm

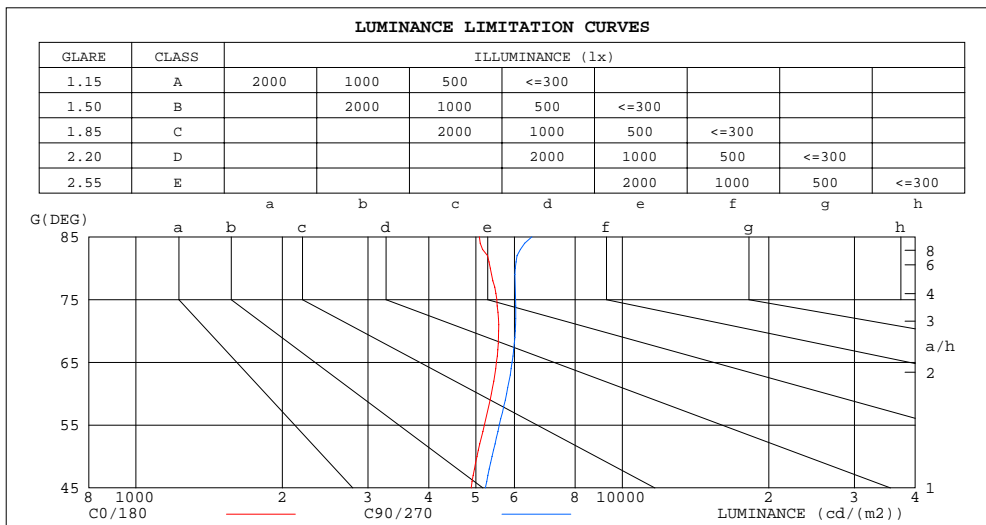
%lum = 72.7%
%lamp = 72.7%

C Range: 0 - 360DEG
C Interval: 15.0DEG
Test Speed: HIGH
Temperature:25.3DEG
Operators:
Test Date:2019-12-10

γ Range: 0 - 180DEG
γ Interval: 1.0DEG
Test System:EVERFINE GO-2000A_V1 SYSTEM V2.0.362
Humidity:65.0%
Test Distance:12.586m [K=1.0000]
Remarks:

LUMINANCE LIMITATION CURVES

NAME: 软灯条 红光	TYPE:	WEIGHT:
SPEC.:LWF-NS-112467W60	DIM.: 0.5	SERIAL No.:
MFR.: LEDWIDE LIGHTING CO., LTD	SUR.:0.01*0.5	Shielding Angle:



LUMINANCE cd/(m2)		
G(DEG)	C0/180	C90/270
85	5083	6516
80	5351	6023
75	5520	6035
70	5570	6026
65	5510	5934
60	5380	5781
55	5205	5586
50	5025	5399
45	4891	5228

C Range: 0 - 360DEG
 C Interval: 15.0DEG
 Test Speed: HIGH
 Temperature:25.3DEG
 Operators:
 Test Date:2019-12-10

γ Range: 0 - 180DEG
 γ Interval: 1.0DEG
 Test System:EVERFINE GO-2000A_V1 SYSTEM V2.0.362
 Humidity:65.0%
 Test Distance:12.586m [K=1.0000]
 Remarks:

WEC AND CCEC

NAME: 软灯条 红光	TYPE:	WEIGHT:
SPEC.:LWF-NS-112467W60	DIM.: 0.5	SERIAL No.:
MFR.: LEDWIDE LIGHTING CO., LTD	SUR.:0.01*0.5	Shielding Angle:

ρcc	80%			70%			50%			30%			10%			0
ρw	50%	30%	10%	50%	30%	10%	50%	30%	10%	50%	30%	10%	50%	30%	10%	0
ρfc	20%			20%			20%			20%			20%			0
RCR	RCR:Room Cavity Ratio						Wall Exitance Coefficients(WEC)									
0.0																
1.0	.337	.191	.061	.329	.188	.060	.315	.181	.058	.302	.174	.056	.289	.168	.054	
2.0	.311	.171	.052	.305	.168	.052	.292	.162	.050	.280	.157	.049	.269	.152	.048	
3.0	.285	.152	.045	.279	.150	.045	.268	.145	.044	.257	.141	.043	.248	.137	.042	
4.0	.261	.136	.040	.256	.134	.040	.246	.130	.039	.236	.127	.038	.228	.124	.038	
5.0	.240	.122	.035	.235	.121	.035	.226	.118	.035	.218	.115	.034	.210	.112	.034	
6.0	.221	.111	.032	.217	.110	.032	.209	.107	.031	.202	.105	.031	.195	.102	.030	
7.0	.205	.101	.029	.201	.100	.029	.194	.098	.028	.188	.096	.028	.181	.094	.028	
8.0	.191	.093	.026	.188	.092	.026	.181	.091	.026	.175	.089	.026	.169	.087	.025	
9.0	.179	.086	.024	.175	.086	.024	.170	.084	.024	.164	.082	.024	.159	.081	.023	
10.0	.167	.080	.022	.165	.080	.022	.159	.078	.022	.154	.077	.022	.150	.075	.022	

ρcc	80%			70%			50%			30%			10%			0
ρw	50%	30%	10%	50%	30%	10%	50%	30%	10%	50%	30%	10%	50%	30%	10%	0
ρfc	20%			20%			20%			20%			20%			0
RCR	RCR:Room Cavity Ratio						Ceiling Cavity Exitance Coefficients(CCEC)									
0.0	.203	.203	.203	.173	.173	.173	.118	.118	.118	.068	.068	.068	.022	.022	.022	
1.0	.194	.168	.144	.166	.144	.124	.114	.099	.086	.065	.057	.050	.021	.018	.016	
2.0	.187	.144	.108	.160	.124	.093	.110	.086	.065	.063	.050	.038	.020	.016	.012	
3.0	.180	.127	.084	.154	.109	.073	.106	.076	.051	.061	.044	.030	.020	.014	.010	
4.0	.172	.114	.069	.148	.098	.060	.102	.068	.042	.059	.040	.025	.019	.013	.008	
5.0	.165	.103	.058	.141	.089	.051	.097	.063	.036	.056	.037	.021	.018	.012	.007	
6.0	.157	.095	.050	.135	.082	.044	.093	.058	.031	.054	.034	.018	.017	.011	.006	
7.0	.150	.088	.045	.129	.077	.039	.089	.054	.028	.052	.032	.016	.017	.010	.005	
8.0	.144	.083	.041	.124	.072	.035	.086	.050	.025	.050	.030	.015	.016	.010	.005	
9.0	.137	.078	.037	.118	.067	.032	.082	.047	.023	.048	.028	.014	.015	.009	.005	
10.0	.132	.073	.035	.113	.064	.030	.079	.045	.021	.046	.026	.013	.015	.009	.004	

C Range: 0 - 360DEG
 C Interval: 15.0DEG
 Test Speed: HIGH
 Temperature:25.3DEG
 Operators:
 Test Date:2019-12-10

γ Range: 0 - 180DEG
 γ Interval: 1.0DEG
 Test System:EVERFINE GO-2000A_V1 SYSTEM V2.0.362
 Humidity:65.0%
 Test Distance:12.586m [K=1.0000]
 Remarks:

UGR(Unified Glare Rating) Table

NAME: 软灯条 红光	TYPE:	WEIGHT:
SPEC.:LWF-NS-112467W60	DIM.: 0.5	SERIAL No.:
MFR.: LEDWIDE LIGHTING CO., LTD	SUR.:0.01*0.5	Shielding Angle:

ceiling/cavity	0.7	0.7	0.5	0.5	0.3	0.7	0.7	0.5	0.5	0.3
walls	0.5	0.3	0.5	0.3	0.3	0.5	0.3	0.5	0.3	0.3
working plane	0.2	0.2	0.2	0.2	0.2	0.2	0.2	0.2	0.2	0.2
Room dimensions	Viewed crosswise					Viewed endwise				
x = 2H y = 2H	27.8	29.3	28.1	29.6	29.8	28.1	29.7	28.4	29.9	30.2
3H	29.7	31.2	30.1	31.5	31.7	30.1	31.6	30.4	31.8	32.1
4H	30.6	32.0	30.9	32.2	32.5	31.0	32.4	31.3	32.7	33.0
6H	31.2	32.5	31.6	32.8	33.2	31.7	33.0	32.1	33.3	33.6
8H	31.5	32.7	31.8	33.0	33.4	32.0	33.2	32.3	33.5	33.9
12H	31.6	32.8	32.0	33.2	33.5	32.2	33.4	32.6	33.7	34.1
4H 2H	28.6	30.0	28.9	30.2	30.5	28.8	30.2	29.2	30.5	30.8
3H	30.7	31.9	31.1	32.3	32.6	31.0	32.2	31.4	32.6	32.9
4H	31.7	32.8	32.1	33.2	33.5	32.0	33.1	32.4	33.5	33.9
6H	32.5	33.5	32.9	33.9	34.3	32.9	33.9	33.3	34.3	34.7
8H	32.8	33.7	33.2	34.1	34.5	33.2	34.2	33.7	34.6	35.0
12H	33.0	33.8	33.4	34.2	34.7	33.5	34.4	34.0	34.8	35.2
8H 4H	32.1	33.0	32.5	33.4	33.8	32.4	33.3	32.8	33.7	34.1
6H	33.1	33.8	33.5	34.3	34.7	33.4	34.2	33.9	34.6	35.1
8H	33.5	34.2	34.0	34.6	35.1	33.9	34.6	34.4	35.0	35.5
12H	33.8	34.4	34.3	34.9	35.4	34.3	34.9	34.8	35.4	35.9
12H 4H	32.1	33.0	32.6	33.4	33.8	32.4	33.3	32.9	33.7	34.1
6H	33.2	33.9	33.7	34.3	34.8	33.5	34.2	34.0	34.7	35.2
8H	33.6	34.2	34.2	34.7	35.2	34.0	34.6	34.5	35.1	35.6
Variations with the observer position at spacings:										
S = 1.0H	+ 0.1 / - 0.1					+ 0.1 / - 0.1				
1.5H	+ 0.2 / - 0.3					+ 0.2 / - 0.3				
2.0H	+ 0.2 / - 0.4					+ 0.2 / - 0.4				

CIE Pub.117, 78.11 lm Total Lamp Luminous Flux Correct (8log(F/F0) = -8.9)

C Range: 0 - 360DEG
 C Interval: 15.0DEG
 Test Speed: HIGH
 Temperature:25.3DEG
 Operators:
 Test Date:2019-12-10

γ Range: 0 - 180DEG
 γ Interval: 1.0DEG
 Test System:EVERFINE GO-2000A_V1 SYSTEM V2.0.362
 Humidity:65.0%
 Test Distance:12.586m [K=1.0000]
 Remarks:

UTILIZATION FACTORS TABLE

NAME: 软灯条 红光	TYPE:	WEIGHT:
SPEC.:LWF-NS-112467W60	DIM.: 0.5	SERIAL No.:
MFR.: LEDWIDE LIGHTING CO., LTD	SUR.:0.01*0.5	Shielding Angle:

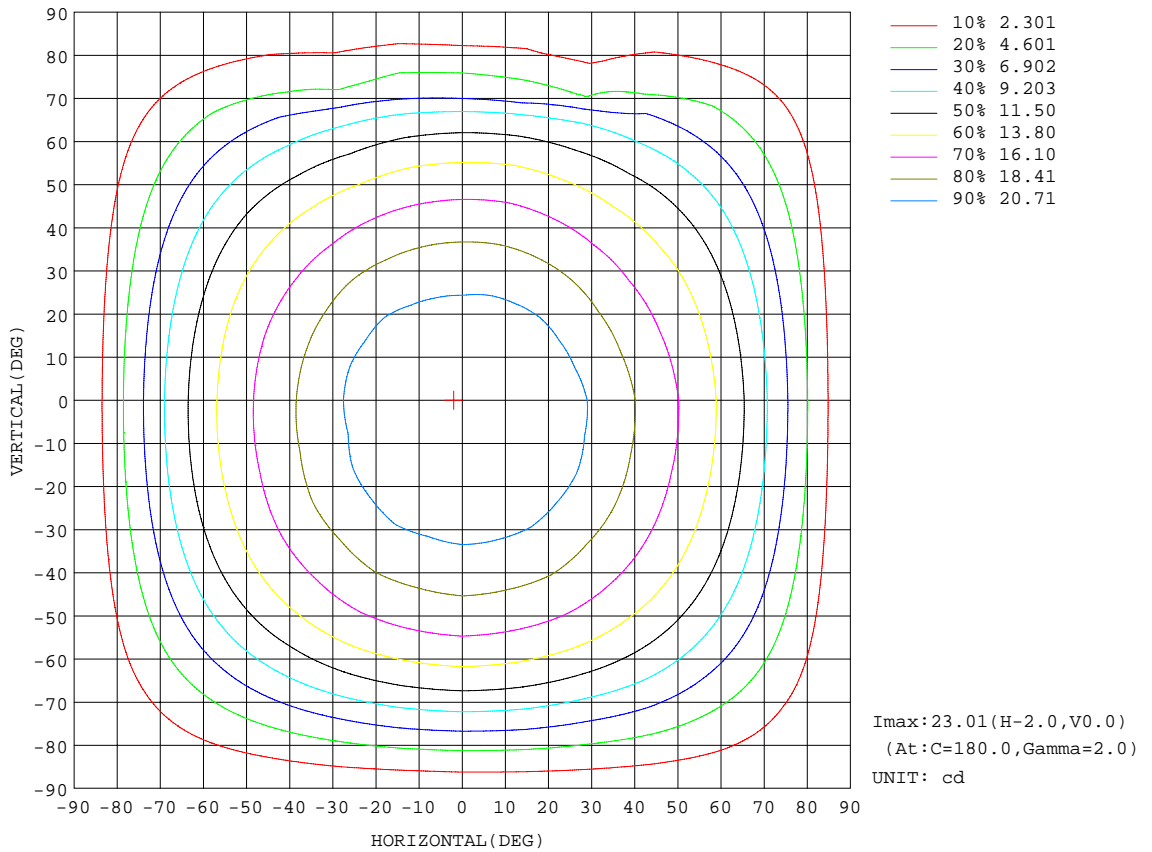
REFLECTANCE										
Ceiling	0.8	0.8	0.8	0.7	0.7	0.7	0.5	0.5	0.5	0
Walls	0.7	0.5	0.3	0.7	0.5	0.3	0.7	0.5	0.3	0
Working plane	0.2	0.2	0.2	0.2	0.2	0.2	0.2	0.2	0.2	0
ROOM INDEX	UTILIZATION FACTORS(PERCENT) $k(RI) \times RCR = 5$									
k = 0.60	54	42	35	54	42	35	52	41	35	28
0.80	64	52	44	63	52	44	61	51	44	36
1.00	73	61	53	71	60	53	69	62	52	44
1.25	80	69	61	78	68	61	75	66	60	52
1.50	85	74	67	83	73	66	80	71	65	57
2.00	92	83	76	90	82	75	86	79	73	65
2.50	97	88	81	94	87	80	90	84	78	69
3.00	100	93	87	98	91	85	93	88	83	74
4.00	104	98	93	102	96	92	97	93	89	79
5.00	107	102	97	104	100	96	100	96	92	82
ROOM INDEX	UF(total)									Direct
According to DIN EN 13032-2 2004			Suspended				SHRNOM = 1.25			

C Range: 0 - 360DEG
 C Interval: 15.0DEG
 Test Speed: HIGH
 Temperature:25.3DEG
 Operators:
 Test Date:2019-12-10

γ Range: 0 - 180DEG
 γ Interval: 1.0DEG
 Test System:EVERFINE GO-2000A_V1 SYSTEM V2.0.362
 Humidity:65.0%
 Test Distance:12.586m [K=1.0000]
 Remarks:

ISOCANDELA DIAGRAM

NAME: 软灯条 红光	TYPE:	WEIGHT:
SPEC.:LWF-NS-112467W60	DIM.: 0.5	SERIAL No.:
MFR.: LEDWIDE LIGHTING CO., LTD	SUR.:0.01*0.5	Shielding Angle:



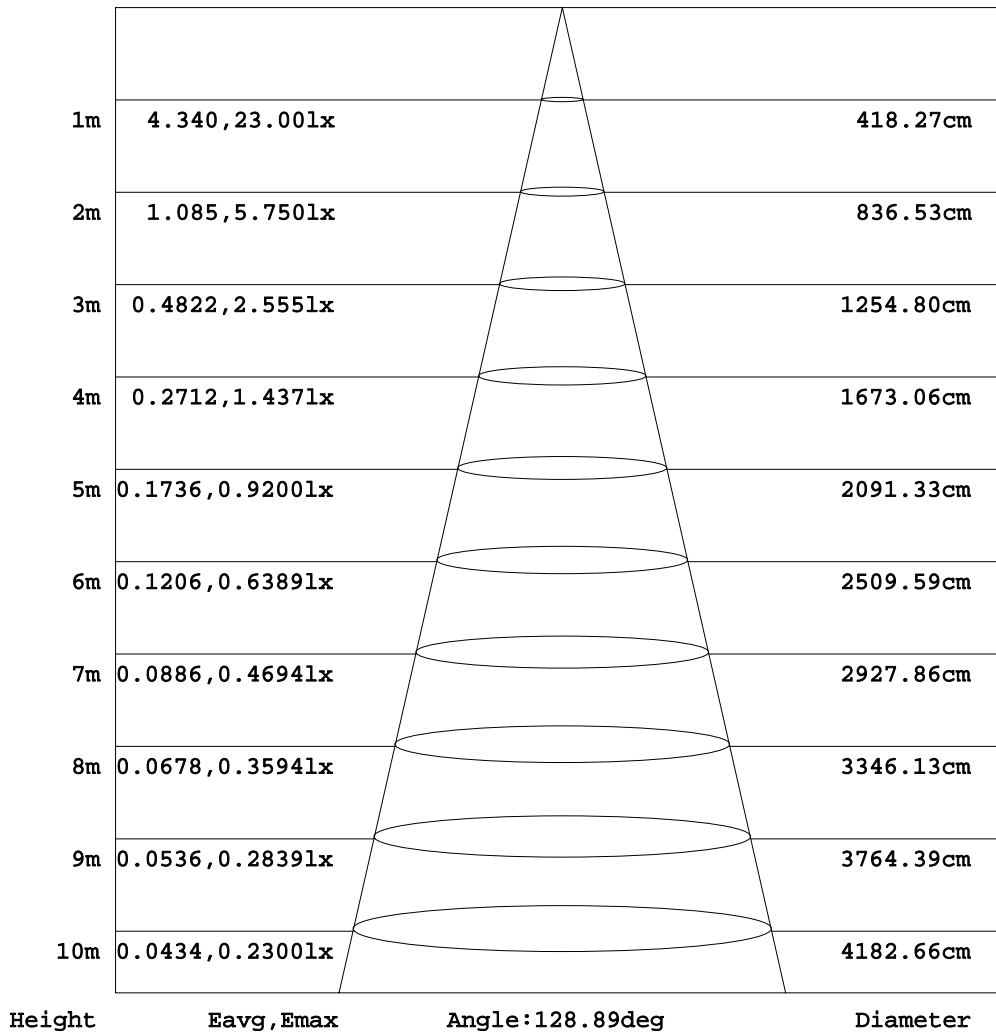
C Range: 0 - 360DEG
 C Interval: 15.0DEG
 Test Speed: HIGH
 Temperature: 25.3DEG
 Operators:
 Test Date: 2019-12-10

γ Range: 0 - 180DEG
 γ Interval: 1.0DEG
 Test System: EVERFINE GO-2000A_V1 SYSTEM V2.0.362
 Humidity: 65.0%
 Test Distance: 12.586m [K=1.0000]
 Remarks:

AAI Figure

NAME: 软灯条 红光	TYPE:	WEIGHT:
SPEC.:LWF-NS-112467W60	DIM.: 0.5	SERIAL No.:
MFR.: LEDWIDE LIGHTING CO., LTD	SUR.:0.01*0.5	Shielding Angle:

Flux out:62.70 lm

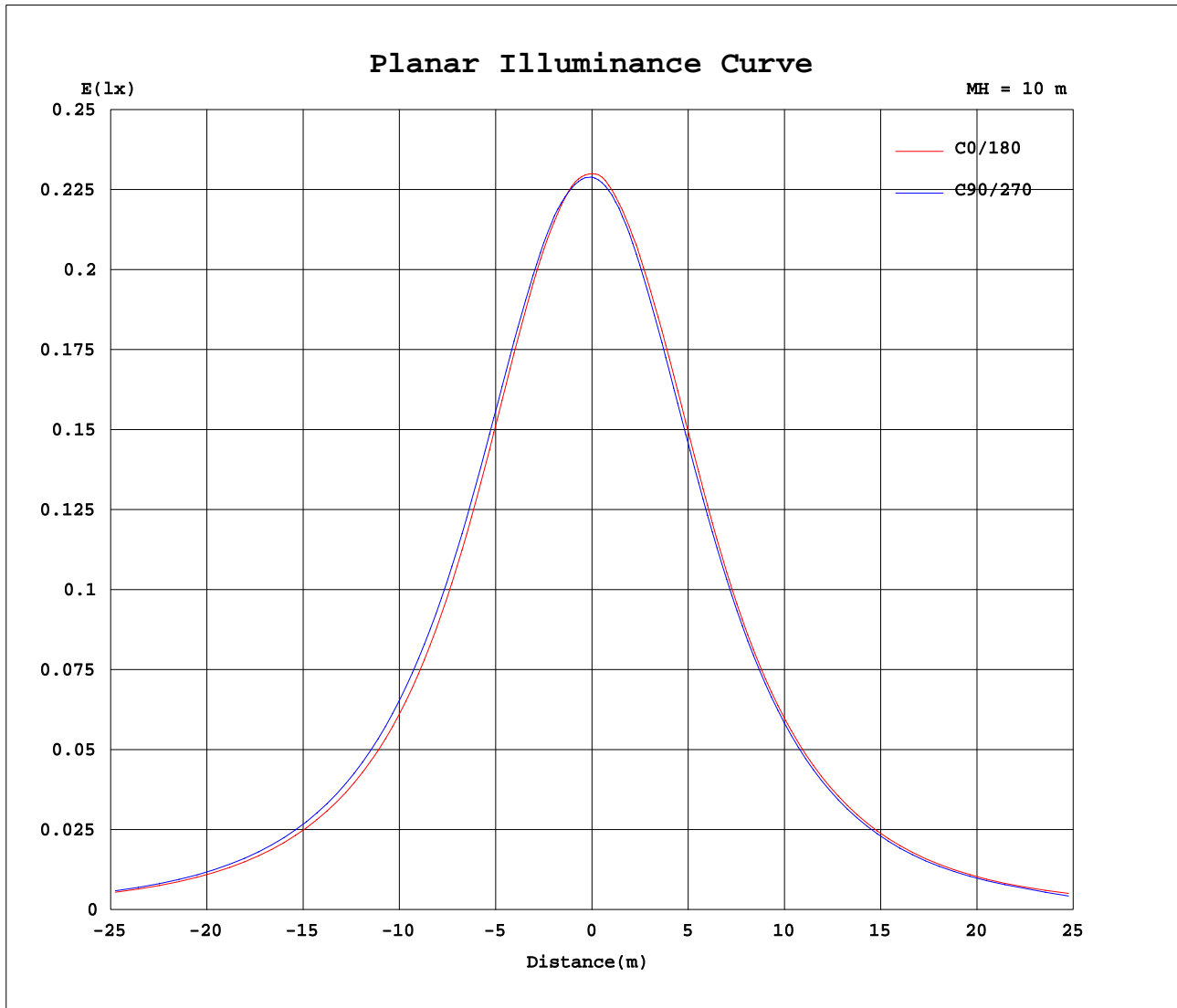


Note:The Curves indicate the illuminated area and the average illumination when the luminaire is at different distance.

C Range: 0 - 360DEG
 C Interval: 15.0DEG
 Test Speed: HIGH
 Temperature:25.3DEG
 Operators:
 Test Date:2019-12-10

γ Range: 0 - 180DEG
 γ Interval: 1.0DEG
 Test System:EVERFINE GO-2000A_V1 SYSTEM V2.0.362
 Humidity:65.0%
 Test Distance:12.586m [K=1.0000]
 Remarks:

Planar Illuminance Curve



C Range: 0 - 360DEG
 C Interval: 15.0DEG
 Test Speed: HIGH
 Temperature: 25.3DEG
 Operators:
 Test Date: 2019-12-10

γ Range: 0 - 180DEG
 γ Interval: 1.0DEG
 Test System: EVERFINE GO-2000A_V1 SYSTEM V2.0.362
 Humidity: 65.0%
 Test Distance: 12.586m [K=1.0000]
 Remarks:

LUMINOUS DISTRIBUTION INTENSITY DATA

NAME: 软灯条 红光	TYPE:	WEIGHT:
SPEC.:LWF-NS-112467W60	DIM.: 0.5	SERIAL No.:
MFR.: LEDWIDE LIGHTING CO., LTD	SUR.:0.01*0.5	Shielding Angle:

Table--1

UNIT: cd

C(DEG) γ (DEG)	0	15	30	45	60	75	90	105	120	135	150	165	180	195	210	225	240	255	270
0	23.0	23.0	22.9	22.9	22.9	22.9	22.9	22.9	22.9	22.9	22.9	22.9	23.0	23.0	22.9	22.9	22.9	22.9	22.9
5	23.0	22.9	22.9	22.9	22.9	22.9	22.9	22.8	22.9	22.9	22.9	22.8	22.9	22.9	22.8	22.8	22.7	22.8	22.7
10	22.8	22.7	22.9	22.8	22.9	22.9	22.9	22.8	22.9	22.7	22.7	22.6	22.6	22.6	22.5	22.5	22.4	22.5	22.4
15	22.5	22.5	22.6	22.6	22.7	22.7	22.8	22.6	22.7	22.5	22.5	22.3	22.3	22.2	22.1	22.1	21.9	22.0	21.9
20	22.1	22.1	22.2	22.3	22.4	22.4	22.4	22.3	22.4	22.1	22.0	21.8	21.8	21.8	21.6	21.6	21.4	21.4	21.3
25	21.4	21.5	21.7	21.7	21.9	21.9	22.0	21.8	21.8	21.6	21.4	21.1	21.1	21.1	20.9	20.9	20.7	20.6	20.6
30	20.5	20.6	20.9	21.1	21.2	21.2	21.3	21.1	21.1	20.8	20.6	20.3	20.2	20.2	19.9	20.0	19.9	19.8	19.7
35	19.5	19.6	19.9	20.1	20.4	20.4	20.4	20.3	20.2	19.9	19.7	19.3	19.2	19.1	18.9	18.9	18.8	18.7	18.8
40	18.4	18.6	18.9	19.1	19.4	19.4	19.5	19.4	19.2	18.9	18.6	18.2	18.1	17.9	17.7	17.7	17.6	17.6	17.7
45	17.3	17.4	17.7	18.0	18.3	18.4	18.5	18.3	18.2	17.7	17.5	17.1	16.9	16.7	16.5	16.3	16.3	16.4	16.5
50	16.2	16.3	16.5	16.8	17.1	17.2	17.4	17.1	16.9	16.5	16.3	15.9	15.7	15.5	15.2	15.0	15.0	15.2	15.2
55	14.9	15.0	15.2	15.4	15.7	15.9	16.0	15.8	15.6	15.2	14.9	14.6	14.4	14.2	13.8	13.6	13.5	13.8	13.8
60	13.4	13.6	13.7	13.9	14.2	14.3	14.5	14.2	14.0	13.6	13.3	13.0	12.8	12.5	12.2	11.9	11.8	12.1	12.2
65	11.6	11.8	11.9	12.1	12.3	12.4	12.5	12.3	12.0	11.7	11.4	11.2	10.9	10.6	10.3	10.0	9.93	10.2	10.4
70	9.52	9.66	9.79	9.96	10.1	10.3	10.3	10.1	9.80	9.45	9.20	8.98	8.75	8.49	8.19	7.89	7.44	7.13	6.88
75	7.14	7.30	7.39	7.60	7.62	7.81	7.81	7.64	7.34	7.04	6.77	6.56	6.37	6.13	5.92	5.57	4.26	5.03	4.95
80	4.65	4.79	4.89	5.09	5.11	5.25	5.23	5.07	4.81	4.55	4.29	4.07	3.90	3.74	3.62	3.39	2.86	3.26	2.86
85	2.22	2.30	2.55	2.69	2.77	2.85	2.84	2.71	2.51	2.27	2.07	1.84	1.67	1.65	1.59	1.61	1.43	1.67	1.46
90	0.33	0.65	0.86	0.89	1.04	1.05	1.09	0.96	0.86	0.61	0.51	0.34	0.16	0.37	0.36	0.49	0.43	0.56	0.48
95	0.04	0.08	0.17	0.17	0.31	0.24	0.27	0.08	0.07	0.07	0.07	0.08	0.07	0.09	0.08	0.12	0.10	0.15	0.11
100	0.04	0.12	0.08	0.11	0.09	0.11	0.09	0.09	0.07	0.10	0.07	0.12	0.09	0.08	0.11	0.09	0.11	0.11	0.11
105	0.07	0.16	0.08	0.14	0.09	0.14	0.09	0.13	0.07	0.14	0.11	0.17	0.12	0.08	0.12	0.09	0.12	0.11	0.12
110	0.11	0.19	0.13	0.19	0.11	0.17	0.12	0.17	0.11	0.17	0.13	0.20	0.16	0.08	0.15	0.09	0.15	0.11	0.15
115	0.12	0.19	0.13	0.22	0.12	0.21	0.13	0.21	0.12	0.21	0.13	0.23	0.16	0.12	0.16	0.13	0.17	0.11	0.16
120	0.16	0.24	0.15	0.25	0.16	0.25	0.16	0.25	0.15	0.24	0.15	0.25	0.19	0.13	0.19	0.14	0.18	0.12	0.19
125	0.17	0.26	0.16	0.26	0.18	0.27	0.22	0.27	0.21	0.26	0.17	0.25	0.20	0.13	0.21	0.14	0.21	0.11	0.21
130	0.21	0.28	0.20	0.26	0.23	0.30	0.26	0.30	0.21	0.26	0.18	0.28	0.21	0.13	0.21	0.14	0.22	0.13	0.21
135	0.24	0.29	0.24	0.27	0.25	0.30	0.25	0.30	0.24	0.27	0.22	0.29	0.23	0.15	0.27	0.16	0.24	0.15	0.24
140	0.27	0.30	0.25	0.28	0.26	0.30	0.25	0.31	0.25	0.29	0.23	0.30	0.25	0.16	0.28	0.19	0.25	0.16	0.25
145	0.27	0.30	0.25	0.30	0.27	0.30	0.29	0.32	0.26	0.31	0.26	0.30	0.27	0.18	0.28	0.25	0.28	0.19	0.26
150	0.27	0.31	0.26	0.31	0.27	0.30	0.29	0.32	0.27	0.31	0.26	0.30	0.30	0.24	0.30	0.25	0.30	0.24	0.29
155	0.27	0.31	0.28	0.31	0.28	0.30	0.29	0.32	0.27	0.32	0.28	0.30	0.30	0.25	0.31	0.27	0.30	0.25	0.30
160	0.27	0.32	0.28	0.32	0.28	0.30	0.29	0.32	0.27	0.33	0.28	0.30	0.30	0.25	0.33	0.27	0.30	0.26	0.34
165	0.27	0.33	0.28	0.32	0.28	0.31	0.29	0.33	0.27	0.33	0.28	0.30	0.30	0.25	0.34	0.27	0.30	0.27	0.35
170	0.27	0.33	0.29	0.33	0.28	0.32	0.29	0.33	0.27	0.33	0.28	0.30	0.30	0.29	0.36	0.27	0.30	0.27	0.35
175	0.27	0.35	0.30	0.34	0.28	0.32	0.29	0.35	0.28	0.33	0.28	0.30	0.30	0.29	0.36	0.29	0.30	0.30	0.37
180	0.30	0.35	0.30	0.34	0.28	0.32	0.35	0.38	0.38	0.34	0.30	0.30	0.30	0.34	0.36	0.30	0.30	0.30	0.34

C Range: 0 - 360DEG
 C Interval: 15.0DEG
 Test Speed: HIGH
 Temperature:25.3DEG
 Operators:
 Test Date:2019-12-10

γ Range: 0 - 180DEG
 γ Interval: 1.0DEG
 Test System:EVERFINE GO-2000A_V1 SYSTEM V2.0.362
 Humidity:65.0%
 Test Distance:12.586m [K=1.0000]
 Remarks:

LUMINOUS DISTRIBUTION INTENSITY DATA

NAME: 软灯条 红光	TYPE:	WEIGHT:
SPEC.:LWF-NS-112467W60	DIM.: 0.5	SERIAL No.:
MFR.: LEDWIDE LIGHTING CO., LTD	SUR.:0.01*0.5	Shielding Angle:

Table--2

UNIT: cd

C(DEG) γ (DEG)	285	300	315	330	345														
0	22.9	22.9	22.9	22.9	22.9														
5	22.8	22.7	22.8	22.7	22.9														
10	22.5	22.4	22.5	22.5	22.6														
15	22.0	22.0	22.1	22.1	22.3														
20	21.5	21.5	21.6	21.6	21.8														
25	20.7	20.8	20.9	20.9	21.1														
30	19.9	19.9	20.0	20.0	20.2														
35	18.8	18.8	18.9	18.9	19.1														
40	17.7	17.6	17.6	17.7	18.0														
45	16.5	16.4	16.3	16.4	16.8														
50	15.3	15.1	15.0	15.2	15.6														
55	13.9	13.7	13.7	13.9	14.4														
60	12.3	12.1	12.1	12.4	12.9														
65	10.4	10.2	10.3	10.7	11.2														
70	6.63	7.18	8.18	8.58	9.05														
75	4.50	3.84	5.63	6.33	6.72														
80	2.68	2.20	3.31	3.99	4.28														
85	1.40	1.02	1.75	1.87	2.07														
90	0.51	0.26	0.53	0.44	0.54														
95	0.19	0.07	0.07	0.07	0.06														
100	0.13	0.11	0.06	0.09	0.06														
105	0.11	0.12	0.06	0.11	0.06														
110	0.12	0.15	0.10	0.15	0.06														
115	0.13	0.17	0.13	0.16	0.09														
120	0.13	0.18	0.14	0.18	0.11														
125	0.13	0.19	0.14	0.20	0.12														
130	0.13	0.23	0.14	0.21	0.12														
135	0.14	0.25	0.14	0.23	0.14														
140	0.16	0.25	0.16	0.25	0.16														
145	0.18	0.27	0.17	0.27	0.17														
150	0.24	0.30	0.21	0.28	0.22														
155	0.27	0.30	0.26	0.31	0.27														
160	0.28	0.30	0.27	0.33	0.27														
165	0.28	0.33	0.27	0.34	0.27														
170	0.28	0.33	0.27	0.34	0.27														
175	0.28	0.33	0.29	0.34	0.28														
180	0.30	0.30	0.30	0.33	0.29														

C Range: 0 - 360DEG
 C Interval: 15.0DEG
 Test Speed: HIGH
 Temperature:25.3DEG
 Operators:
 Test Date:2019-12-10

γ Range: 0 - 180DEG
 γ Interval: 1.0DEG
 Test System:EVERFINE GO-2000A_V1 SYSTEM V2.0.362
 Humidity:65.0%
 Test Distance:12.586m [K=1.0000]
 Remarks: